



Northern Area Grade Band Alignment
Committee
December 21, 2022

Objective

This presentation will provide the committee information that will help in this work session to analyze what a PK-6 & 7-12 grade band might look like in the Northern district.

Information includes:

- The Perfect Storm
- Weighted Student Funding
- PK-6 & 7-12 Grade Band Alignment
 - Instructional & Programmatic overview
 - Facility Options
- How is Grimm + Parker helping GCPS?

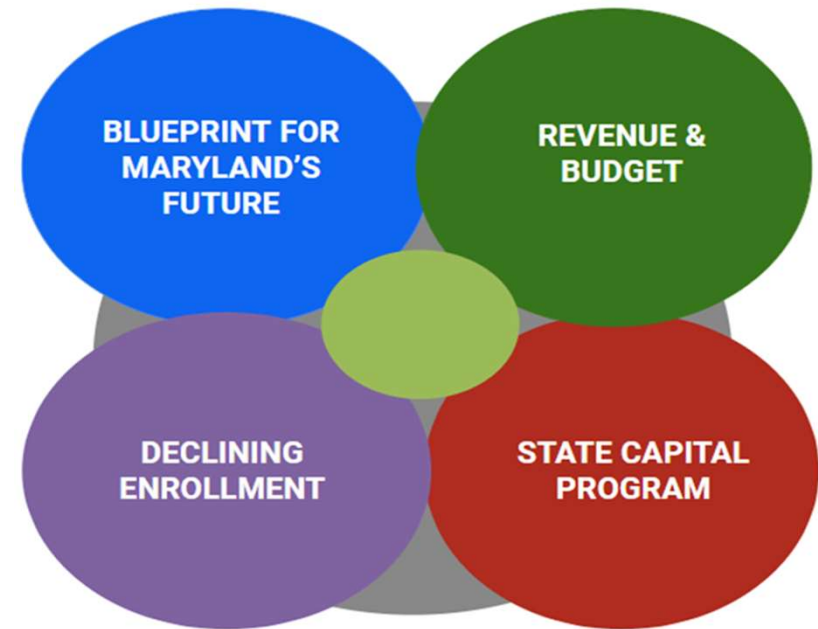
Today's session is intended to be a work session. Information shared between GCPS staff, Grimm + Parker associates, and committee stakeholders is intended to assist in preparing a recommendation to the Board of Education.

A Perfect Storm

External variables are forcing Garrett County Public Schools to change in many ways.

- **Blueprint for Maryland's Future Act (The Blueprint)** is a landmark, generational piece of legislation intended to enhance and improve the investment in and operation of Maryland's public school system.
- **Declining Enrollment** has been a hardship for Garrett County Public Schools since the 1970s, losing on average 1.7% per year since 2013.
- **Revenue & Budget** will continue to be squeezed with the system's new requirements of Blueprint (increasing costs) and decline in enrollment (decreasing potential revenue).
- **State Capital Program** has undergone revolutionary change with the adoption of the Built to Learn Act and accountability changes at the Interagency Commission of School Construction.

These changes have forced GCPS Staff, Board and Stakeholders to consider alternatives in facility utilization and grade band alignments.



Perfect Storm - a particularly bad or critical state of affairs, arising from a number of negative and unpredictable factors (Oxford Dictionary).

A Perfect Storm - Blueprint

The Blueprint for Maryland's Future Act: The Blueprint is a landmark piece of legislation passed in 2021, which includes comprehensive changes to Maryland's early childhood and public schools. The legislation consists of those policies and accountability requirements recommended by the Commission on Innovation and Excellence in Education.

The Five Blueprint Pillars

5

BLUEPRINT PILLARS

The Blueprint encompasses five pillars, each including key initiatives aimed at transforming the quality of education in Maryland, and narrowing and closing opportunity and achievement gaps.



EARLY CHILDHOOD EDUCATION

- Support more families to access no cost Pre-K
- Scale the impact of Patty & Judy Centers
- Expand family options through public/private Pre-K Partnerships



HIGH-QUALITY & DIVERSE TEACHERS & LEADERS

- Increasing starting salary to minimum \$60,000
- New career ladder and incentives for National Board Certified Teachers up to \$17,000
- Raising expectations for teacher preparation and induction



COLLEGE & CAREER READINESS

- New college and career readiness standard by 10th grade
- Aligned curriculum resources and assessments
- College and career readiness and support pathways
- Expanded career and technical education system



MORE RESOURCES FOR STUDENT SUCCESS

- Community Schools and School-based Health Centers expansion
- Concentration of Poverty grants
- Targeted supports for historically underserved students



GOVERNANCE & ACCOUNTABILITY

- Expert Review Teams
- Accountability and Implementation Board
- Local education agency Implementation Plans
- Maryland State Department of Education monitoring and technical assistance

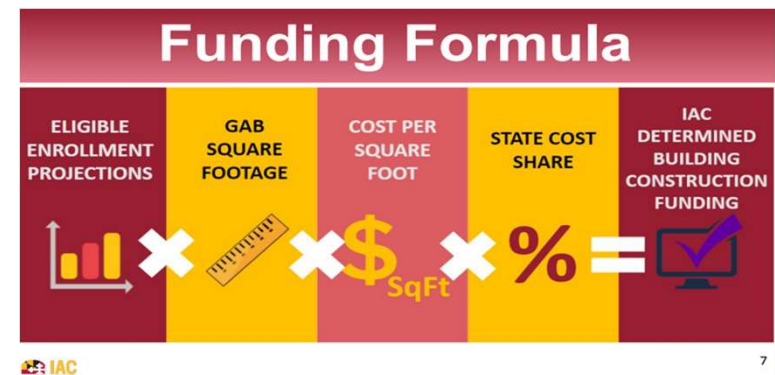
A Perfect Storm - State Capital Program

Built to Learn Act: Enacted into law in 2020, the Built to Learn (BTL) Act became effective on February 12, 2021. The BTL Act created significant funding opportunities, but also required that much information be gathered and reported on all of Maryland's public school buildings. Additionally, the BTL Act:

- Creates the Public School Facilities Priority Fund, which uses the results of the Statewide Facilities Assessment required by Education Article §5-310 to prioritize funding to schools with the highest needs.
- Requires school systems to report on utilization of facilities annually
- The State Cost Share Percentage for Garrett County is now equal to that of our neighboring county to the east.

GCPS has built a collaborative relationship with the Maryland State Interagency Commission on School Construction (IAC) to understand how Garrett County may maximize state participation in our capital plan.

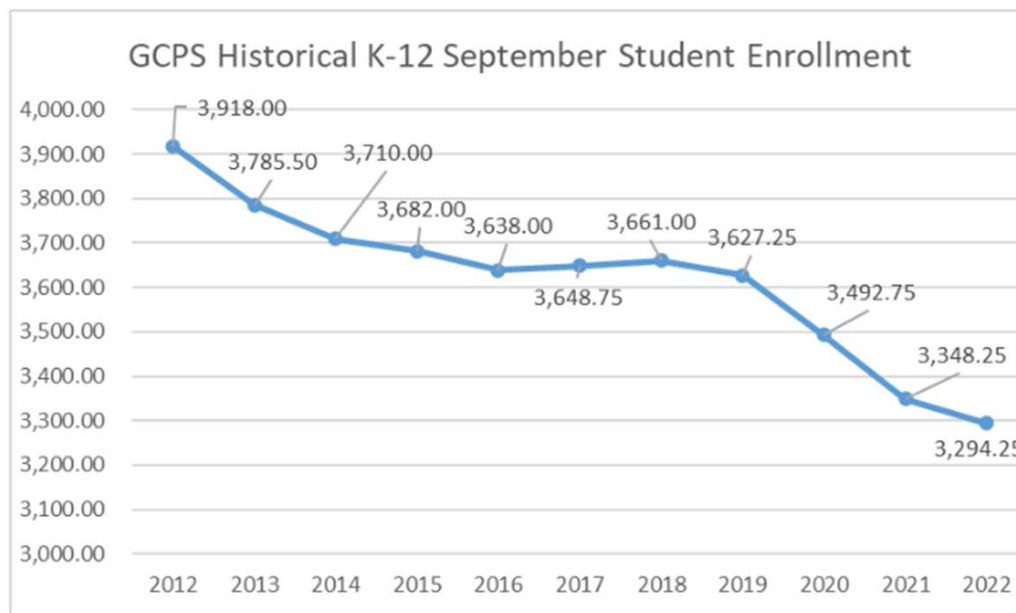
Following two visits to Garrett County Senior IAC staff members, Alex Donahue and Bret Waskiewicz, presented to the BOE on programs, funding eligibility and cost of ownership on March 22, 2022.



A Perfect Storm - Student Enrollment

Declining Student Enrollment: system-wide GCPS has experienced continued decline in student enrollment. From September 2012 to September 2022, GCPS is down 623.75 students or 15.9%. NOTE: PreK is not included.

According to the **Maryland Department of Planning**, the trend in enrollment decline is estimated to continue in the coming years.



**Northern High School Graduating
Class sizes have steadily decreased:**

1997 - 135 students

2012 - 122 students

2017 - 120

2022 - 103 students

This is a 24% decrease

A Perfect Storm - Budget

Revenue: The leading drivers for GCPS operating revenue is student enrollment and local wealth. As student enrollment declines and local wealth increases, GCPS' revenue will likely continue to be *flat to declining*.

Expenditures: *Flat to declining* revenue presents budgetary challenges because:

High Annual Inflation Rate: The annual inflation rate for the United States was 7.7% for 12 months ended October 2022, therefore goods and services continue to cost more, even if we aren't purchasing more.

Staffing Challenges: GCPS is not alone in experiencing a shortage of qualified people to staff open positions and with a seasoned workforce there will likely be more open positions.

Federal Funding Cliff: Federal pandemic relief funds have made it possible to fund many positions and stand up enriching opportunities for students and staff. That funding must be spent by September 2025.

Blueprint for Maryland's Future implementation requirements - teacher salaries & programming requirements will require budgetary increases requiring dollars to shift from current items to Blueprint requirements.



Weighted Student Funding



Overview

The Blueprint for Maryland's Future Funding Formula

The formula for the Blueprint is a weighted-student formula. That means, the formula provides resources to local education agencies (LEAs) based on total student enrollment and on the enrollment of certain student subgroups. The formula also provides program funding for Blueprint-mandated programs.

Base Per-Pupil Amount

- The target per-pupil foundation provides for the costs of providing adequate educational services for an average student. All eligible full-time equivalent students receive this formula aid.
- Any formula weights amount refer back to this program. For example, a weight amount of 85% means 85% of the target per-pupil foundation.

Weighted Amounts

- Weighted amounts provide additional resources to a LEA based upon enrollment of specific subgroups.
- This funding reflects the fact that some student groups may require more resources in order ensure the provision of adequate educational services. For example, an English learner (EL), on average, requires more resources than a non-English learner.

Program Amounts

- Program amounts are allocated to LEAs at a flat, non per-pupil amount. For example, the Guaranteed Tax Base Aid program provides additional State aid to LEAs that 1) have less than 80 percent of the statewide average wealth per pupil, and that 2) provide funding above the local share required by the Foundation Program. The program encourages less wealthy jurisdictions to maintain or increase local education tax effort.



Weighted Student Funding

The total amounts for the base and additional subgroups is dictated by law and funded with both state and local funding. The split is dependent upon the relative wealth of the county.

A weighted student funding system

1. Allocates a base amount for all students and then
2. Allocates additional amount(s) for students with certain characteristics called subgroups.

English Learner				\$8,310
2nd grader (TSI)		\$665		
FARMS (Comp Ed)	\$7,396		\$7,396	
Special Education	\$7,147	\$7,147		
Base Amount (Foundation)	\$8,310	\$8,310	\$8,310	\$8,310
	Student A	Student B	Student C	Student D
	\$22,853	\$16,122	\$24,016	\$8,310

Blueprint Required Student Sub Groups:

- High Poverty/Low Income
- English Learners
- Special Education
- Meeting CCR standard
- Grade Bands (PK & K-3)

Maryland's Schools are now required to budget, monitor and report expenses per pupil, per program per school. Funding MUST follow the student.

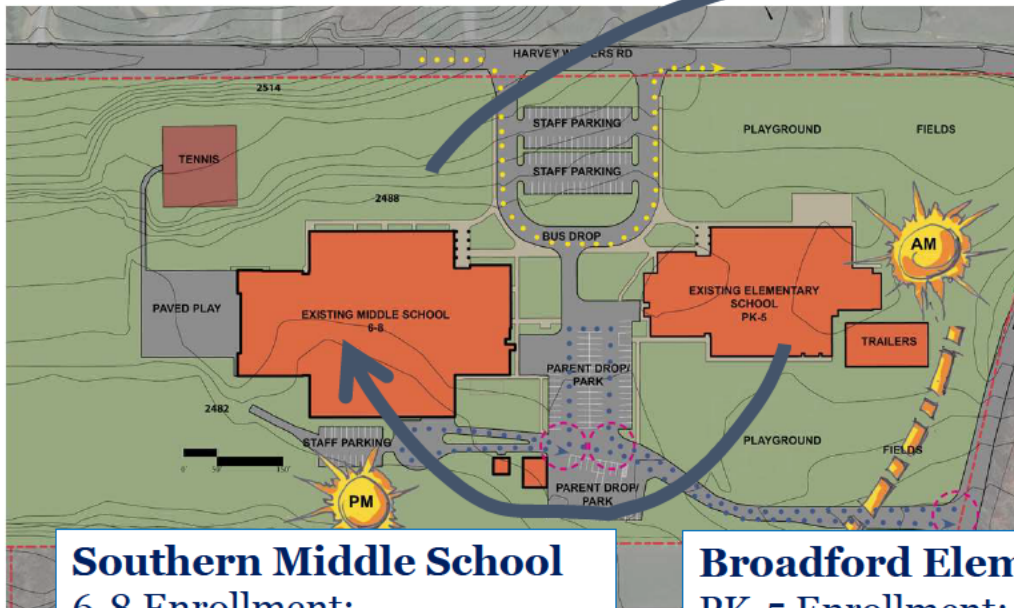
Grade Band Alignment Options

The discussion today is surrounding what a PK-6 & 7-12 grade band may look like in the northern district schools. We want to hear from you!

Superintendent Baker's team has analyzed the opportunities and impacts a change in grade band alignment would have on the following areas with respect to programming and operating budget:

- Educational opportunities
- Legislative mandates of the Blueprint for Maryland's Future Act
- Special Education Services for students Birth to 21
- Student Services including Mental Health, Behavior Intervention and School Nurses
- School System Support Services consisting of Facilities, Safety and Security, Transportation, Food & Nutrition Services, Human Resources & Finance

Southern Grade Band Alignment: Recap

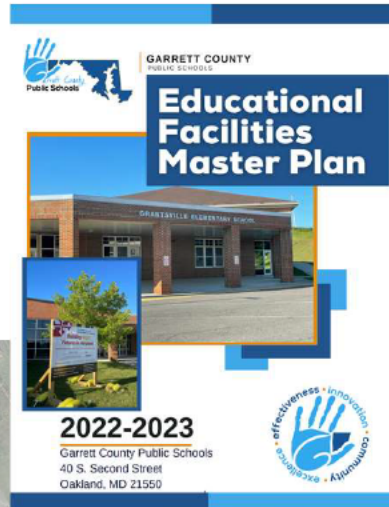


Southern Middle School
6-8 Enrollment:
458 students
IAC State Rated Capacity:
828 students

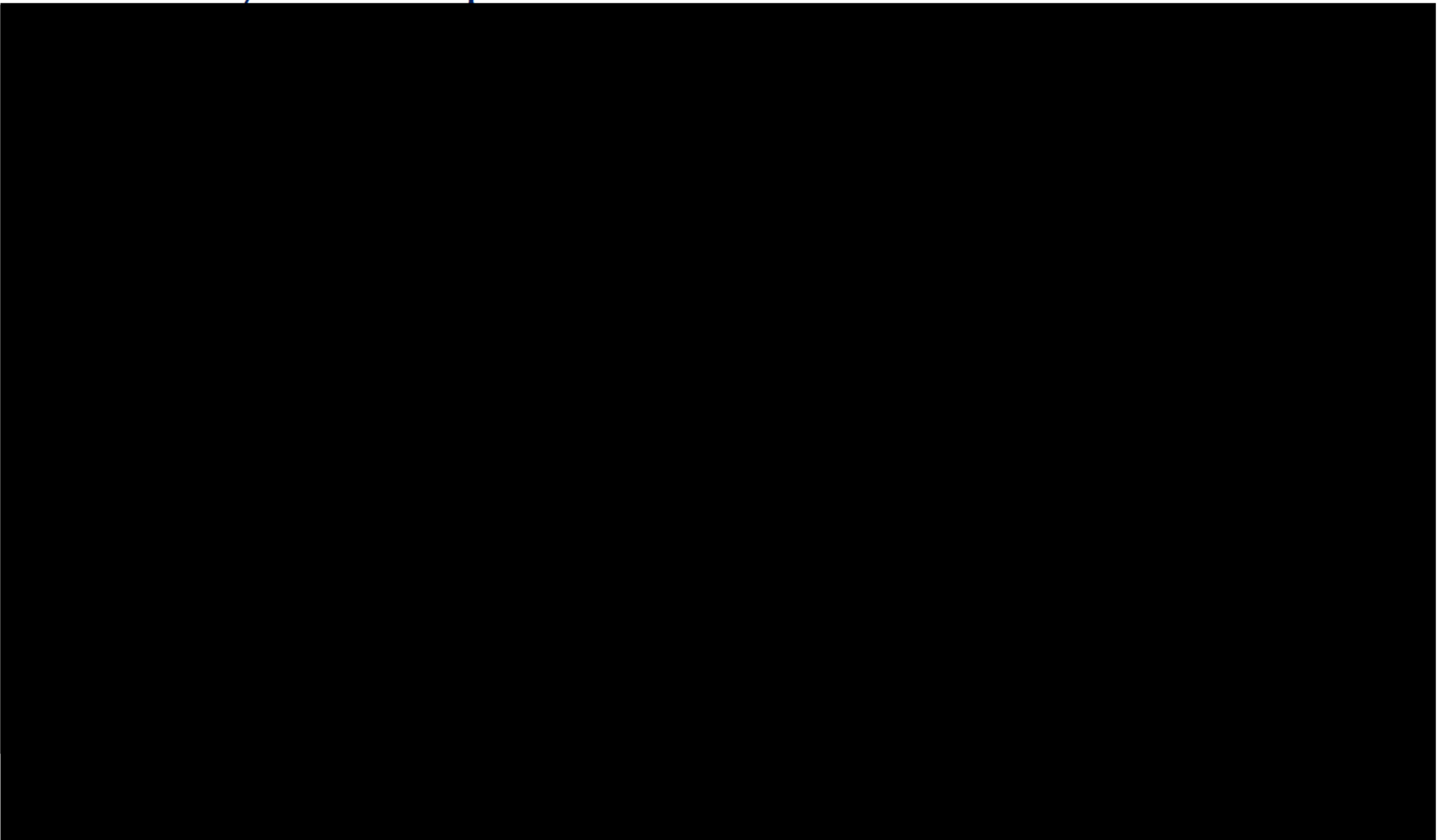
Broadford Elementary School
PK-5 Enrollment:
539 Students
To be demolished



Southern High School
9-12 Enrollment:
626 students
IAC State Rated Capacity:
1450 students



Southern 7-12 – Proposed Floor Plans and Lesson's Learned



Northern Approach: Commitment to Equity

Grade Band Alignment PK-6 & 7-12 Possible Educational Opportunities

Based on work to date on Grade Band Alignment, GCPS has identified the following as potential areas of added educational value for students should the elected board move forward with grade band alignment county-wide.

Added Value

Elementary

- Early childhood centers offering space for Head Start/collaborative 3 year old programs that meet rigorous standards aligned to the Blueprint
- Judy center spaces for early childhood initiatives to support kindergarten readiness
- Computer science resource for upper elementary
- Media specialist resource to support student research
- Maker's space/science labs for elementary students
- Student council and leadership opportunities for 5th graders
- Increased vertical alignment opportunities
- Junior National Honors Society
- Regional behavior suites with concentrated mental health support with centralized staff
- Outdoor learning opportunities
- Collaborative space for intervention services for small groups and collaborative learning.
- Increased stability in class size

Secondary

- Opportunity for 8th graders to earn high school credit
 - Technology Education
 - Computer Science
 - Physical Education
 - Fine Arts including Dance
 - Foreign language
 - Accelerated path for English
- Therapeutic support classrooms with centralized supports
- Behavior suite with concentrated mental health services
- Increased opportunity for support pathways for students who are not on track to meet College and Career Readiness
- Increased vertical alignment opportunities
- Add an additional foreign language
- Sustain current electives and programming

Grade Band Alignment PK-6 & 7-12

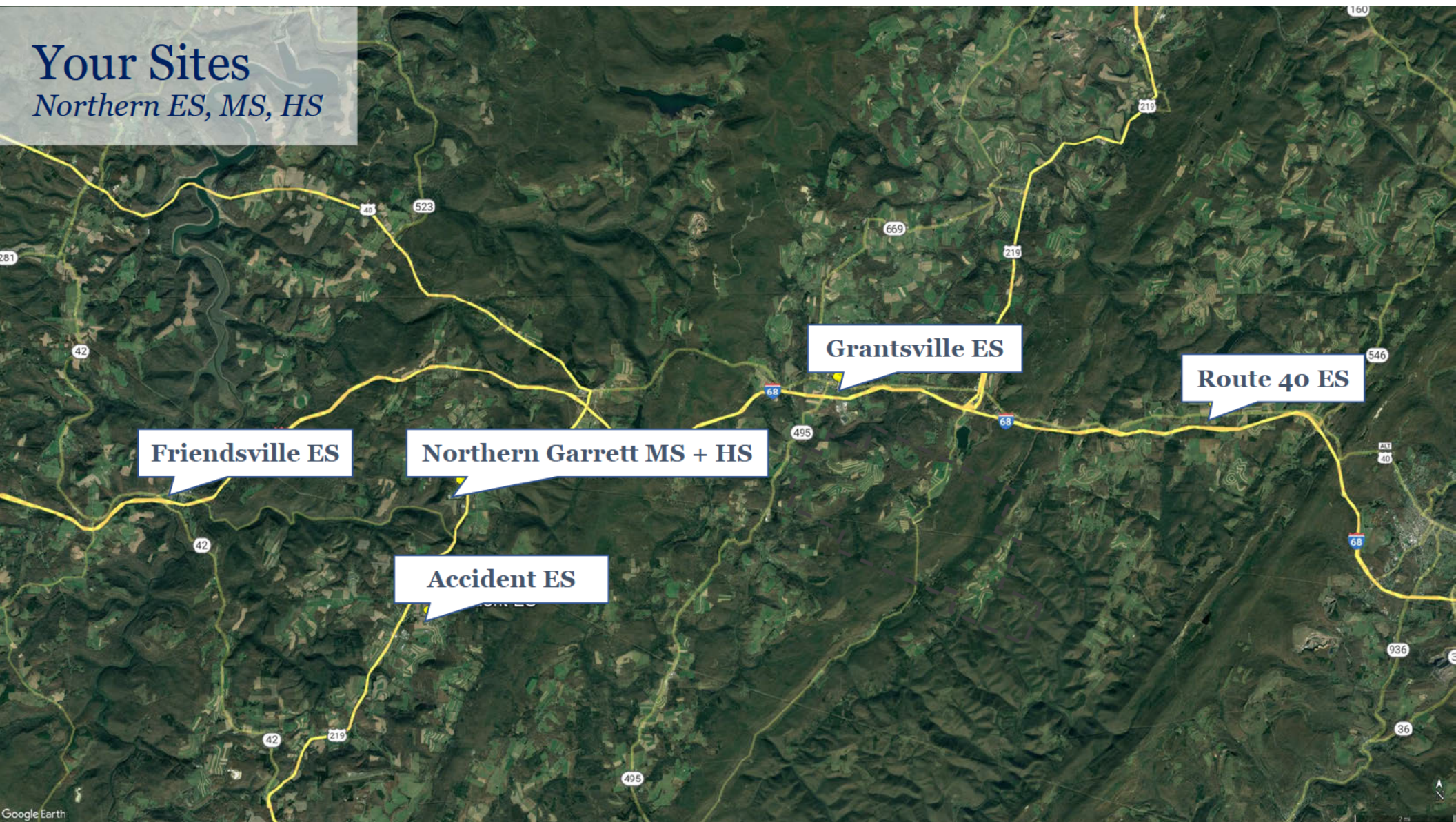
Possible Programmatic Considerations

The programs listed on this slide are local priorities that are not mandated by the state according to state law. If the school system footprint is not addressed, GCPS will have to discuss the sustainability of all non-mandated programs, many of which are listed below in no particular order.

- Elective courses:
 - Creative Writing
 - Journalism Yearbook/Journalism Newspaper
 - SAT Prep
 - Statistics
 - Psychology and Economics
 - Contemporary Problems
 - Environmental Science
 - Music Theory, Piano I and II
 - Weight Training/Physical Activity
 - CTE programs would need to be assessed based on enrollment. The only mandated program is computer science.
 - Ag Mechanics
 - Wildlife and Forestry Management
 - Web Design and Desktop Publishing
 - General Electronics
 - Drafting
 - Auto CAD
 - Information Technology and Computer Applications
- Hickory Environmental Education Center
- Robotics
- Offering general, merit, and honors course levels
- Field trips
- Transportation for sports, band, robotics, CTE, Arts Fair etc.
- Learning Beyond the Classroom
- Number of Sports Offerings
- Universal fully funded four year old pre-k
- National Honors Society
- National History Day
- Science Fair/Envirothon
- I Can Swim
- Positive Behavior Interventions and Supports (PBIS)
- STARS Program
- Fine Arts Fair
- College & Me
- Mock Trial
- Student council
- Amount of Pupil Services Support

Your Sites

Northern ES, MS, HS



Your Project

Overview

	All Options	A	B	C
	Northern High School to match gradeband alignment at Southern High School - supporting grades 7-12.	Maintain 4 Northern Elementary Schools: Grantsville Elementary School, Accident Elementary School, Friendsville Elementary School, and Route 40 Elementary School	Maintain 3 Northern Elementary Schools: Grantsville Elementary School (including Route 40 Elementary enrollment), Accident Elementary School, Friendsville Elementary School	Maintain 1 Northern Elementary School: Grantsville Elementary School (+Route 40 Elementary enrollment), Renovate Northern Middle School to support grades PK-6 for Accident Elementary School and Friendsville Elementary School enrollment
Requirements	Adding classrooms + support spaces for grades 7-8 at Northern High School.	Adding classrooms + support spaces for PK3-6 at 4 elementary schools.	Adding classrooms + support spaces to Grantsville Elementary School to support Route 40 Elementary enrollment. Adding classrooms + support spaces for PK3-6 at all 3 elementary schools.	Renovate Northern Middle School to support Accident Elementary School, Friendsville Elementary School PK-6 and Headstart.
Vacate	N/A	Vacate Northern Middle School	Vacate Northern Middle School, Route 40 Elementary School	Vacate Accident Elementary School, Friendsville Elementary School, Route 40 Elementary School

Our Team

Grimm + Parker Architects



Dave Wolf
LEED AP
Project Manager
15 years @ G+P



Laura Smyles, AIA,
WELL AP
Project Architect
Educational Planner
10 years @ G+P

Consultant Team

Raymond Rase PE, PLS
Civil Project Manager
SPECS, inc.

Randall O. Spencer PE, RCDD
IT Systems Department Head / Electrical Engineer
Ascent Engineering Group, Inc.

Randall Daniels ASPE, ICC, NFPA
Mechanical, Plumbing + Fire Protection Engineer
Ascent Engineering Group, Inc.

Ronald Wolfman PE
Structural Engineer
Wolfman + Associates

William Downey
Chief Estimator
Downey + Scott

Additional G+P Project Support

Karen Burlingame AIA, LEED AP
Quality Control + Quality Assurance

Don Porter, AIA
Code + Life Safety

Amy Upton, AIA, LEED Fellow
Sustainability + Environmental Design

The Grimm + Parker Team

National Expertise, Local Depth

- Ranked **#3 nationally** in K-12 design
- **50-year** history within Maryland
- Only **locally-owned** firm in WBJ Top 10
- More than **190 education + design awards**
- **WNEBC Certified Women-Owned Business**



95+
EMPLOYEES

“Working at G+P means I can play a role in so many parts of the design process.”
- Michael Smyles



Experience: K-12 250+ Educational Projects



K12 Design Considerations

Exploration

Developing space program for the student experience.



*Shift from
Teaching to
Learning*



K12 Design Considerations

Variety of Spaces



Spaces for Collaboration



Hands on Learning



K12 Design Considerations



K12 Design Considerations



*Outdoor
Learning
Spaces*



K12 Design Considerations



*Outdoor
Learning
Spaces*



K12 Design Considerations



*Career and
Technical
Education*



K12 Design Considerations

Acoustics



Access to Daylight



Indoor Air Quality

K12 Design Considerations



Safety and Security



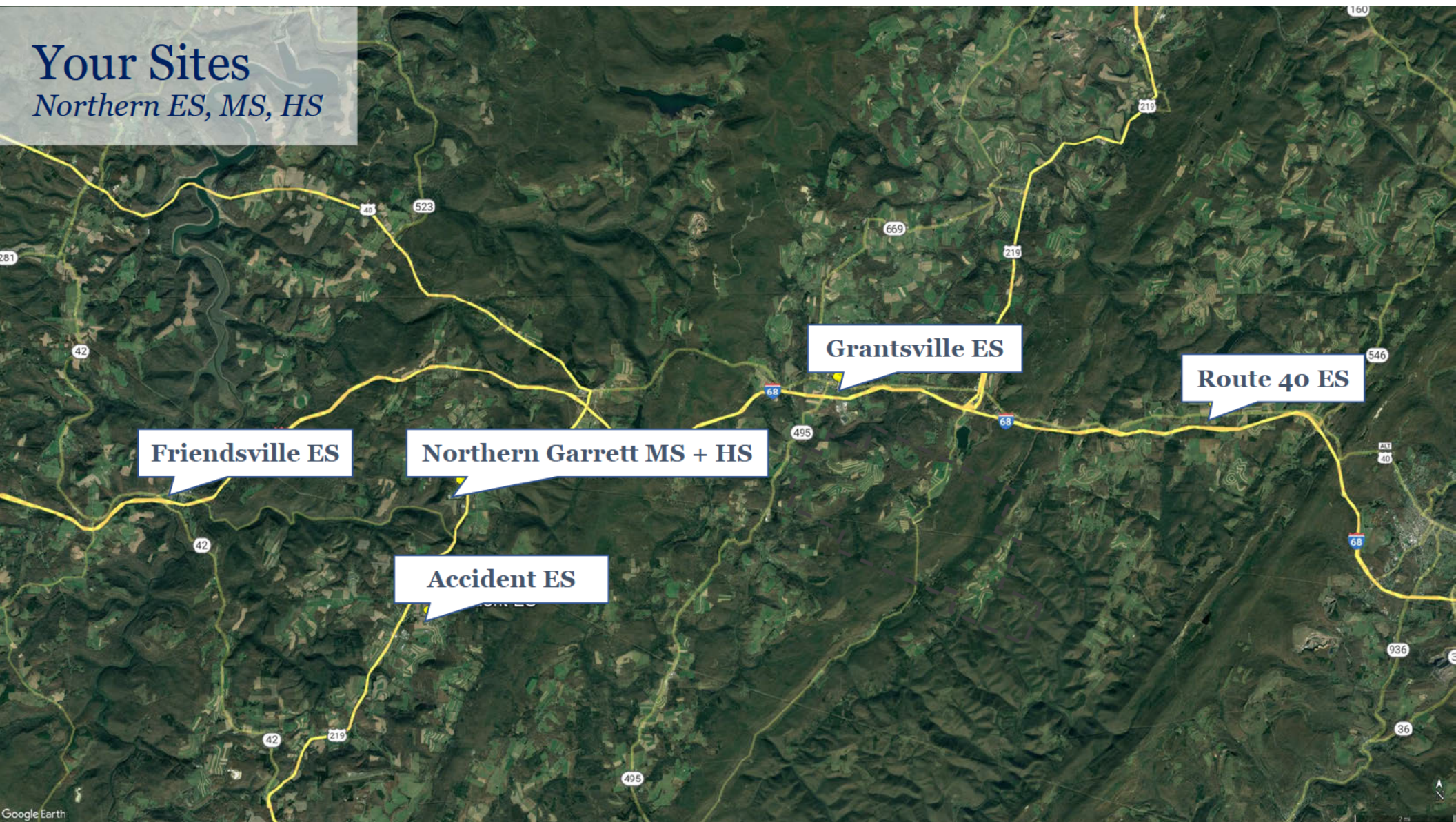
Technology



After Hours Access

Your Sites

Northern ES, MS, HS



Friendsville ES

Northern Garrett MS + HS

Accident ES

Grantsville ES

Route 40 ES

Your Project

Overview

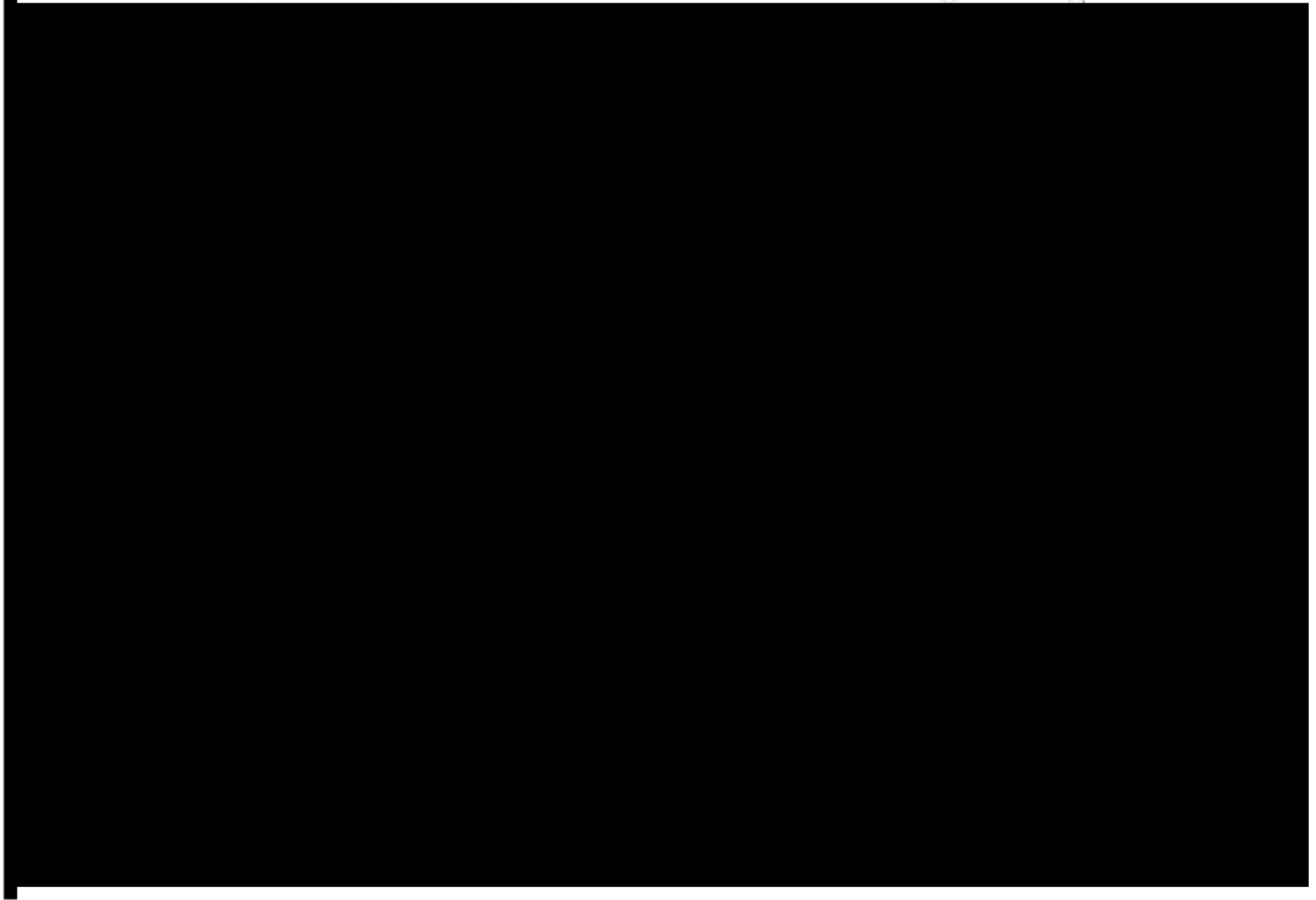
	All Options	C
	Northern High School to match gradeband alignment at Southern High School - supporting grades 7-12.	Maintain 1 Northern Elementary School: Grantsville Elementary School (+Route 40 Elementary enrollment), Renovate Northern Middle School to support grades PK-6 for Accident Elementary School and Friendsville Elementary School enrollment
Requirements	Adding classrooms + support spaces for grades 7-8 at Northern High School.	Renovate Northern Middle School to support Accident Elementary School, Friendsville Elementary School PK-6 and Headstart.
Vacate	N/A	Vacate Accident Elementary School, Friendsville Elementary School, Route 40 Elementary School



Your Site

Existing Middle School Plan

84,000 sq ft
742 SRC



Your Site

Existing Middle School Plan – Affected Areas

84,000 sq ft
742 Current SRC
451 planned enrollment



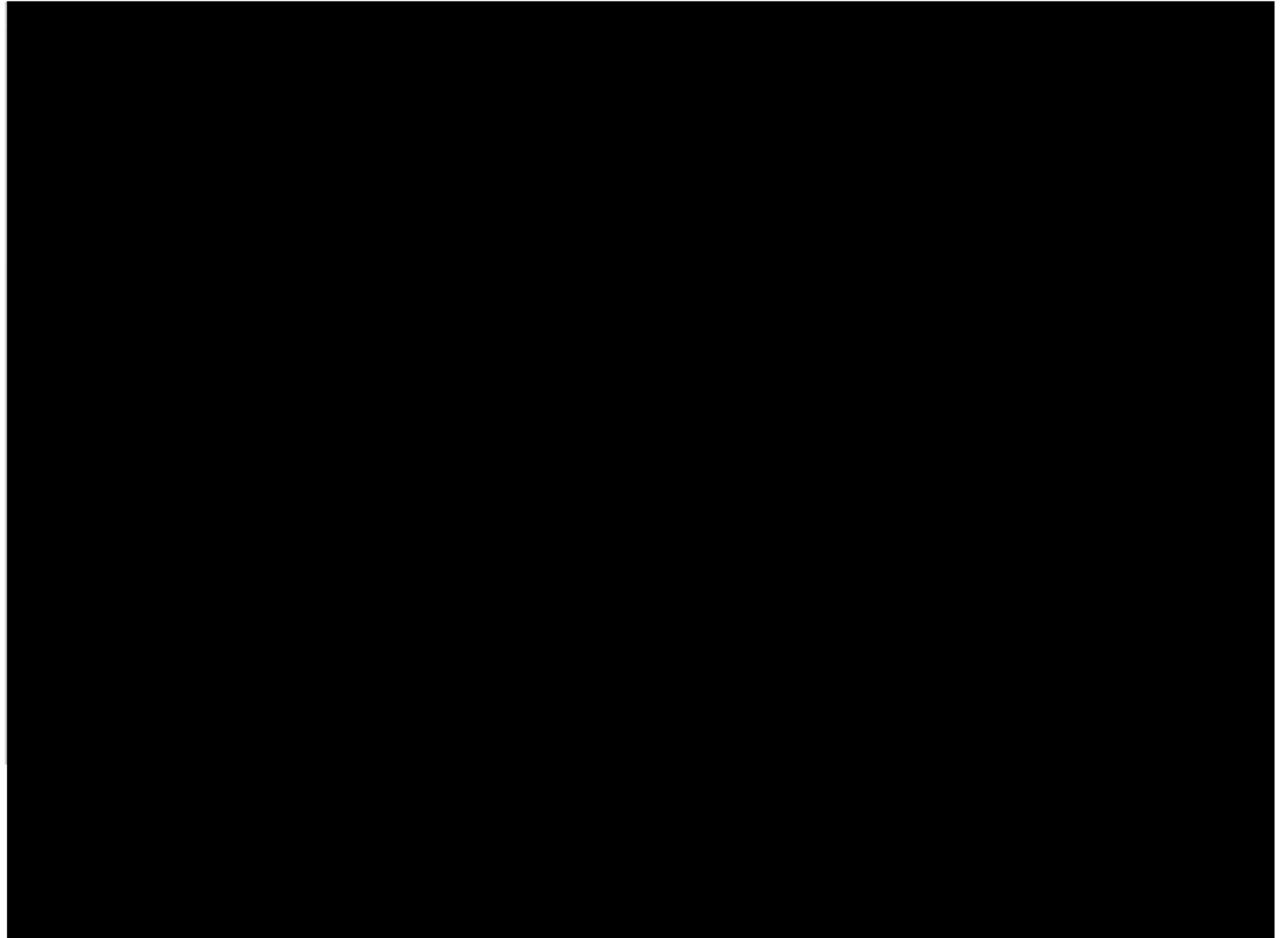
Your Site

Test Fit PK-6 Plan

84,000 sq ft
742 Current SRC
451 planned enrollment

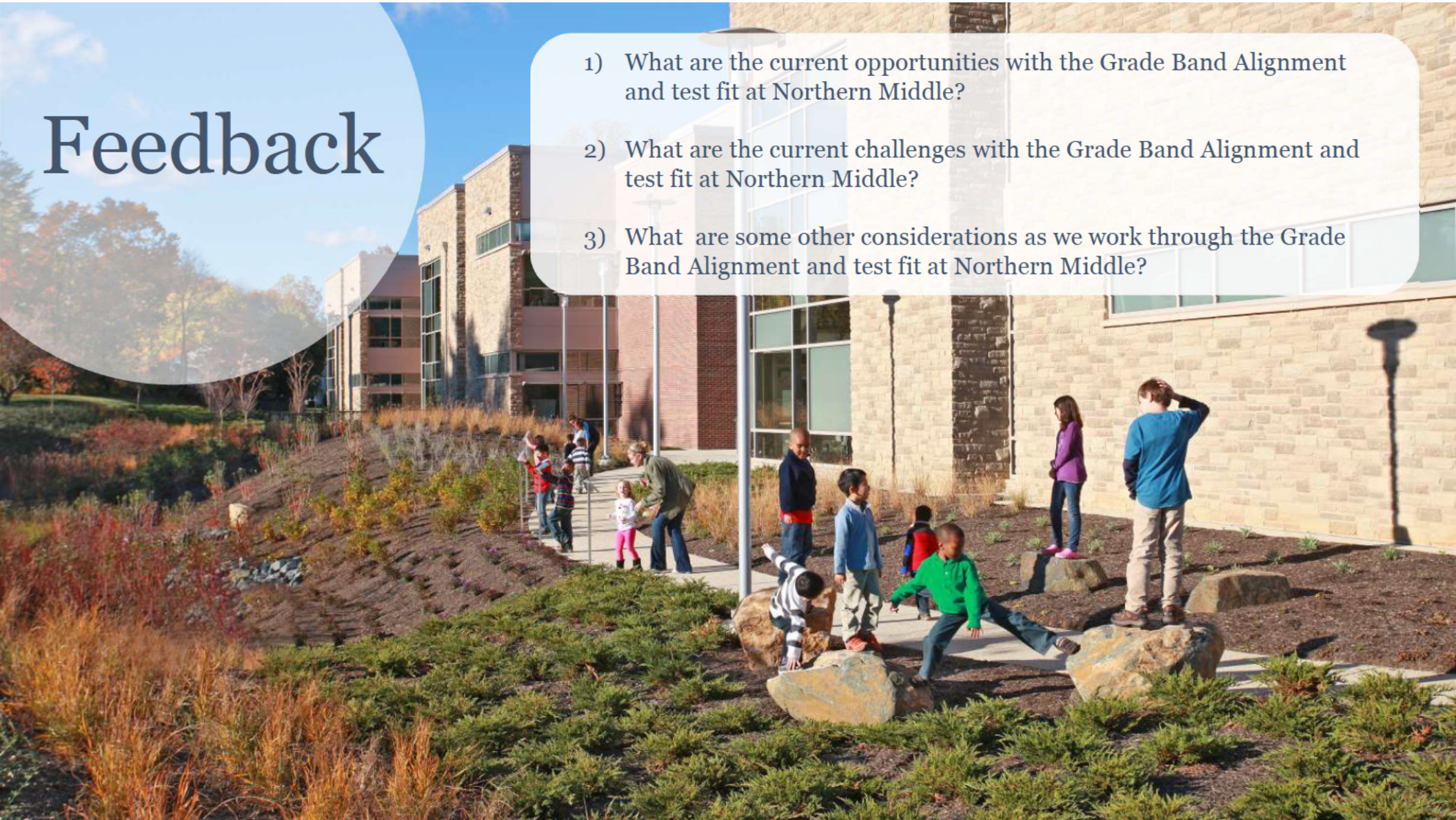
Future Design Considerations:

- Dining
- Arts
- Lab Space
- Gym + Lockers

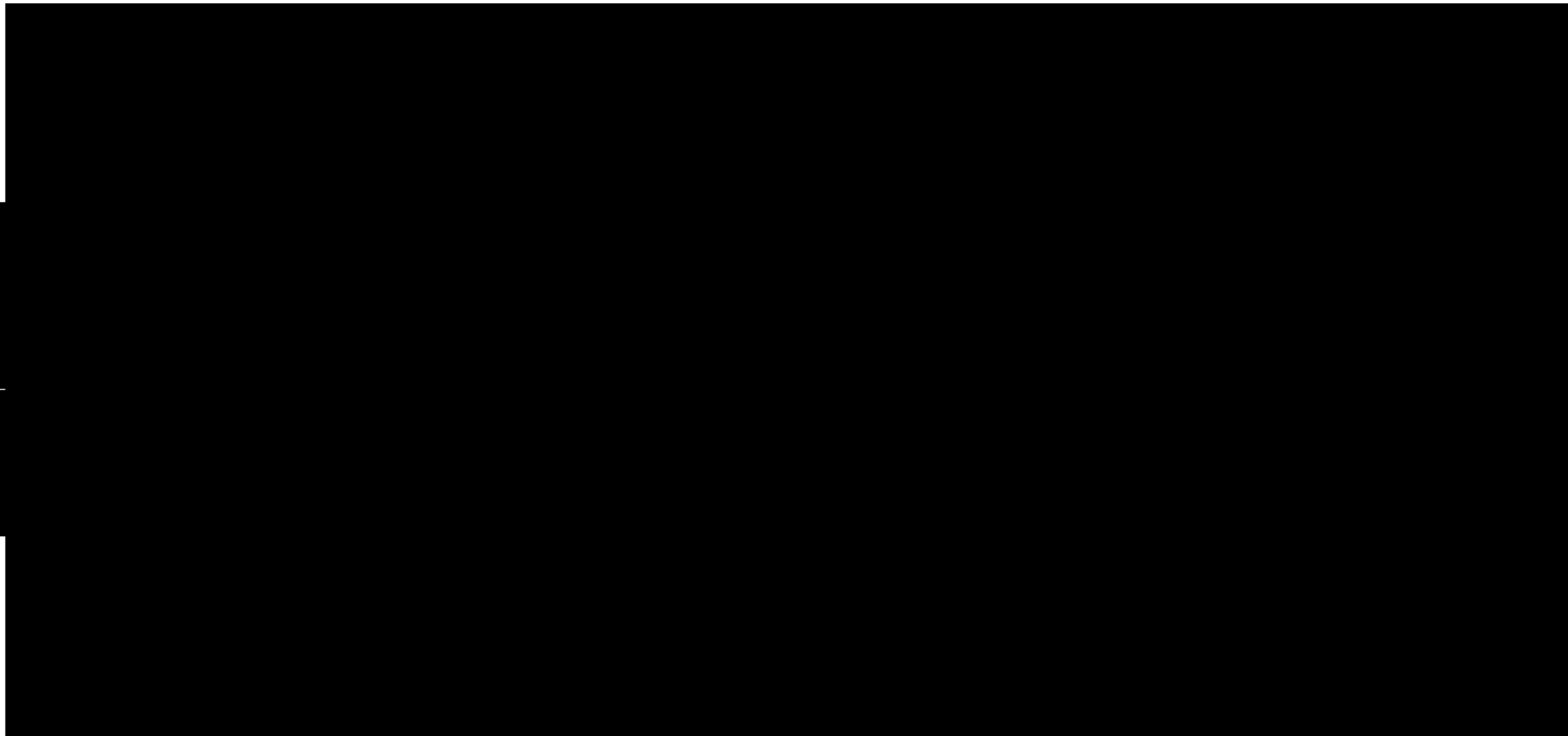


Feedback

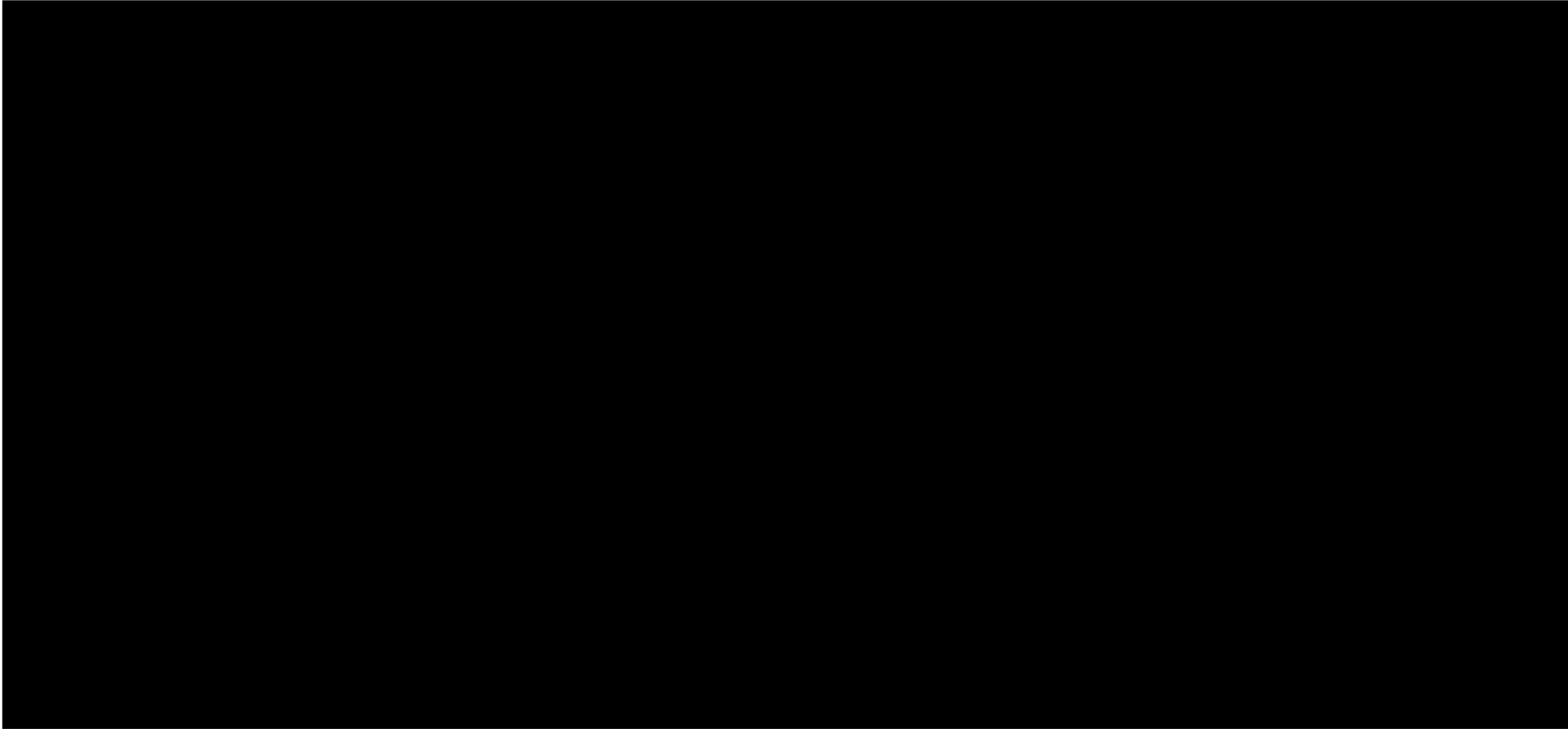
- 1) What are the current opportunities with the Grade Band Alignment and test fit at Northern Middle?
- 2) What are the current challenges with the Grade Band Alignment and test fit at Northern Middle?
- 3) What are some other considerations as we work through the Grade Band Alignment and test fit at Northern Middle?



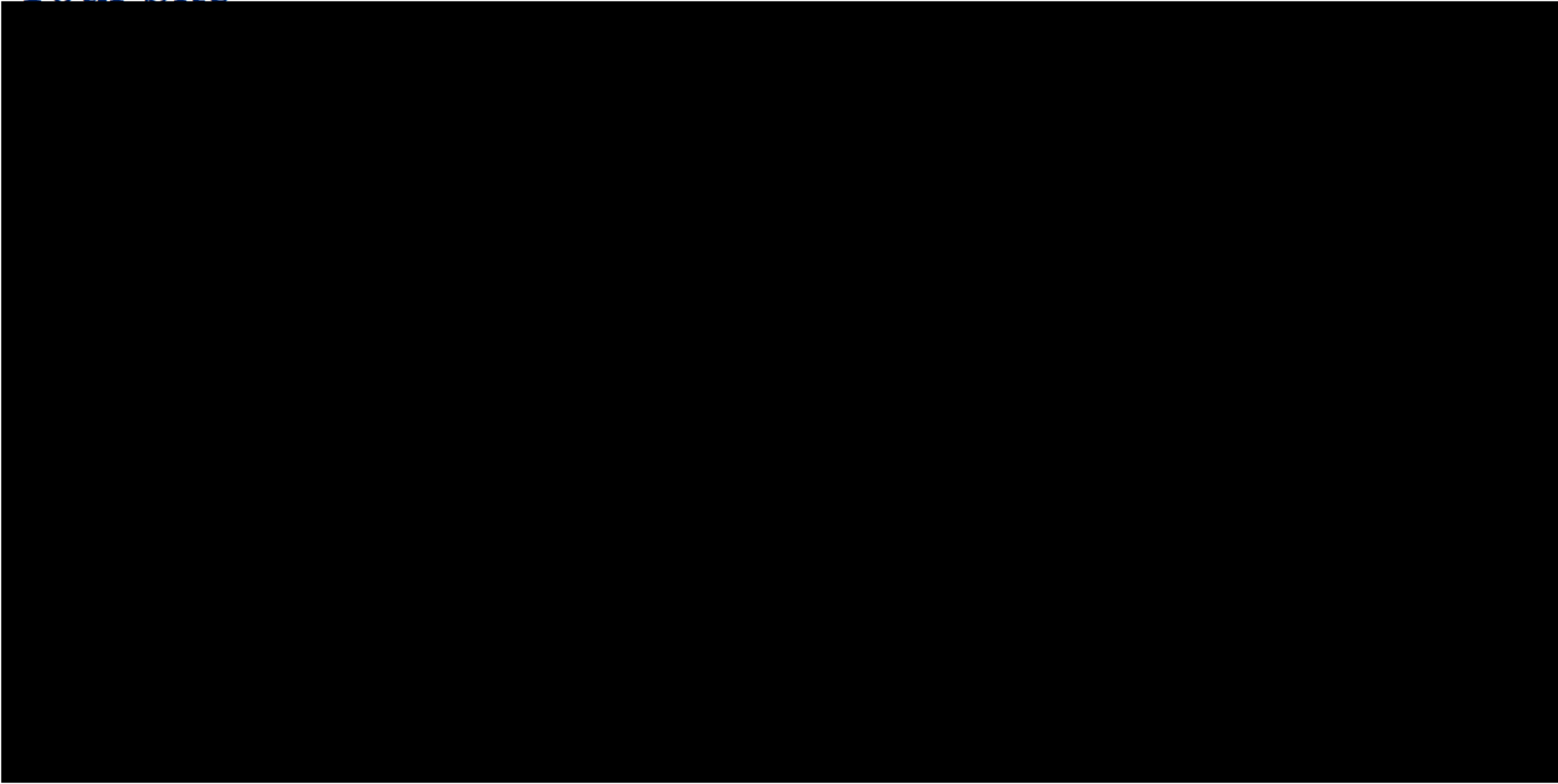
Your Site



Your Site

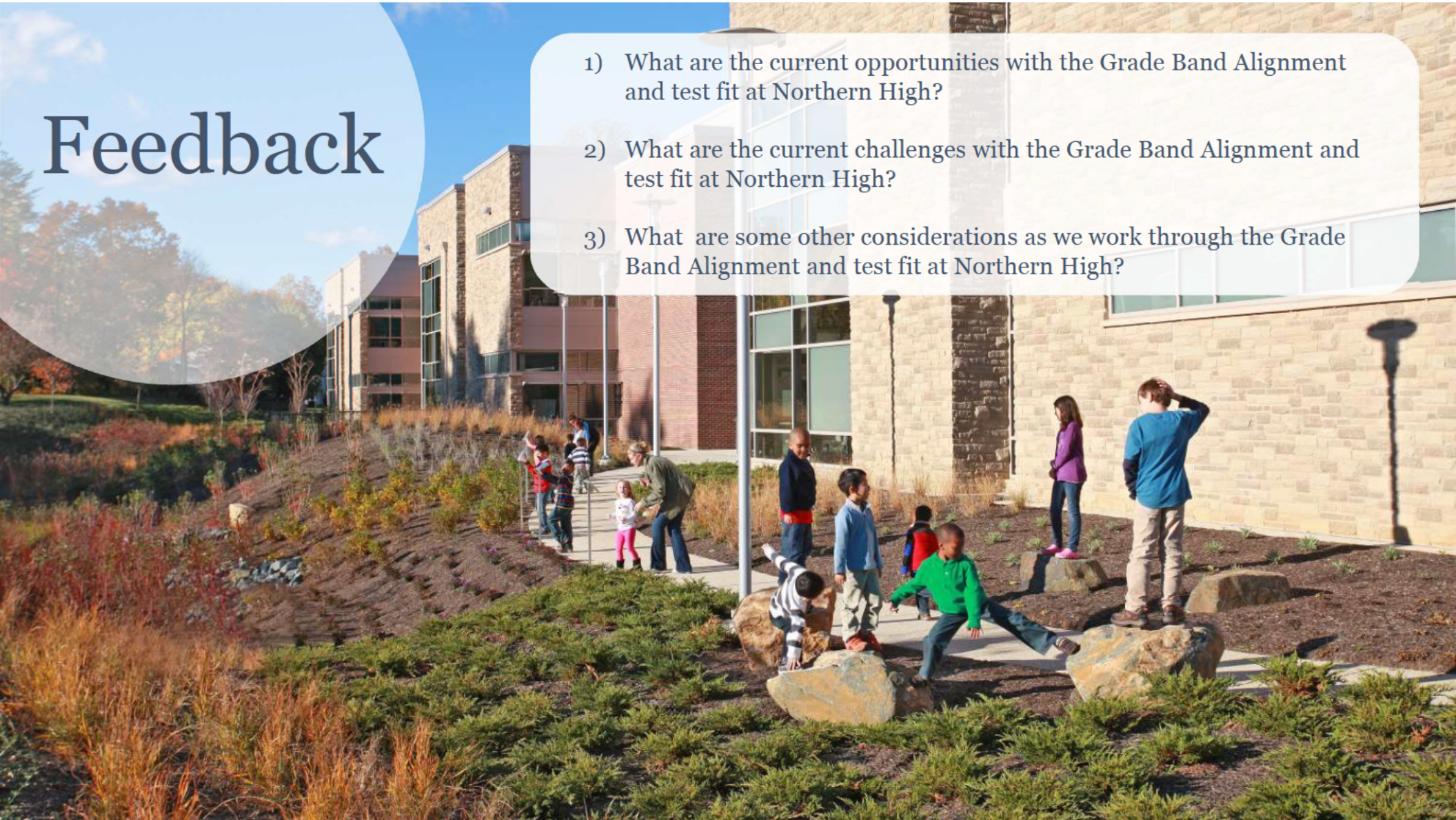


Your Site



Feedback

- 1) What are the current opportunities with the Grade Band Alignment and test fit at Northern High?
- 2) What are the current challenges with the Grade Band Alignment and test fit at Northern High?
- 3) What are some other considerations as we work through the Grade Band Alignment and test fit at Northern High?



Next Steps

- GCPS Staff will be collecting information specific to the analysis of Options A & B with consulting as needed from Grimm + Parker.
- Grimm + Parker will continue work for Option C for Northern Middle and Northern High based on stakeholder feedback.

Multi-Year Proposed Timeline:

SY2022-23 - Committee and Stakeholder meetings. No student or staff disruption.

SY2023-24 - Limited renovations to spaces to accommodate different grade bands. No student or staff disruption. Instructional planning and staffing plan.

SY2024-25 -

- 7th & 8th grade students would begin attending Northern High School.
- Elementaries would become PK-6 grade. (Specific elementaries TBD)



NOTE: At this time, no action has been taken by the Board of Education.